

Anti-H_GDF15 hlgG4 Antibody(CTL-002)

Product Information

GM-71274AB-10	10 µg
GM-71274AB-100	100 µg
GM-71274AB-1000	1 mg

Antibody Information

Species Reactivity	Human
Clone	CTL-002
Source/Isotype	Monoclonal Human IgG4/k
Application	Flow cytometry
Specificity	Detects GDF15.
Gene	GDF15
Other Names	PDF; MIC1; PLAB; MIC-1; NAG-1; PTGFB; GDF-15
Gene ID	9518
Background	Growth/differentiation factor 15 is a protein that in humans is encoded by the GDF15 gene. It is a protein belonging to the transforming growth factor beta superfamily, and it has attracted considerable attention due to its ability to curb food intake and promote weight loss in rodent models of obesity. ¹ GDF15 is expressed by multiple tissues, primarily the liver and the kidney, but also in white (WAT) and brown adipose tissue (BAT) and skeletal muscle and plays an important part in the integrated cellular stress response.
Storage	Store at 2-8°C short term (1-2 weeks). Store at ≤ -20°C long term. Avoid repeated freeze-thaw.
Formulation	Phosphate-buffered solution, pH 7.2.
Endotoxin	< 1 EU/mg, determined by LAL gel clotting assay

Data Examples

Flow cytometry

Membrane Bound H_GDF15 CHO-K1 Cell Line (Catalog # GM-C31025) was stained with Anti-H_GDF15 Antibody (Catalog # GM-71274AB) or isotype control antibody, followed by anti-Human IgG APC-conjugated Secondary Antibody.

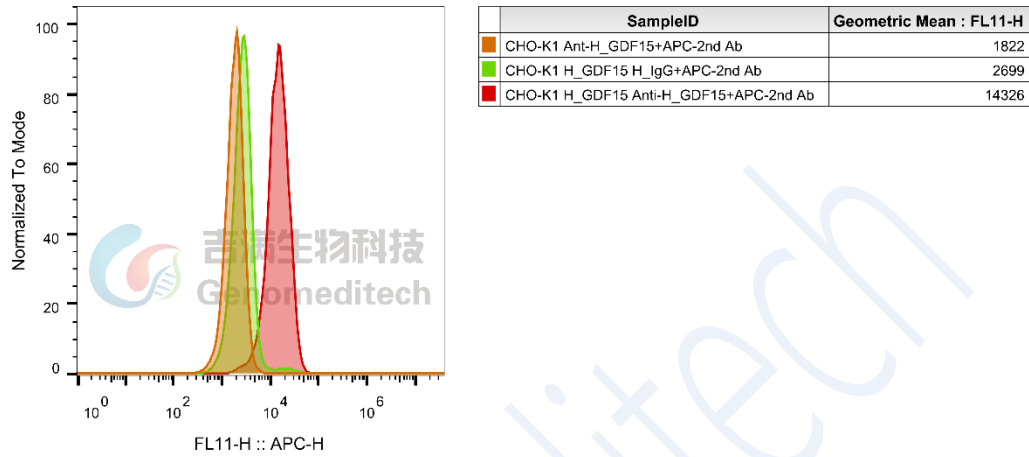


Fig. FACS